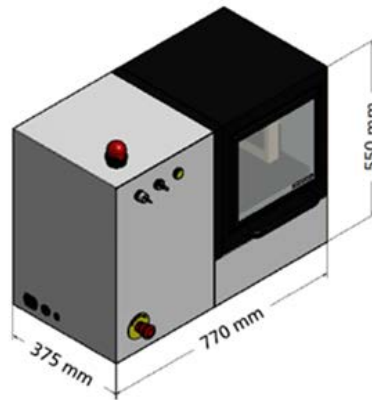


Industrial Computed Tomography



- ❖ Up to 90 keV X-ray energy
- ❖ 150 kg
- ❖ Volume sampling down to 2 μm
- ❖ Imaging time :
60-80 min at HR modus
2-10 min at FastCTModus

HR desktop-unit

Microfocus X-ray Source

Operating Voltage Range: 20-90 keV

Maximum Beam Current: 0,160 mA @ 50 keV

Focal spot size: : 4-9 μm



CMOS X-ray Detector

Number of pixel 2304 x 1300

Active area 11,4 x 6,4 cm

Resolution 49,5 μm

Direct-contact Gd2O2S scintillator



Manipulation System for the Specimen

Rotational stage (n x 360°)

Specimen elevation stage, travel range: 200 mm

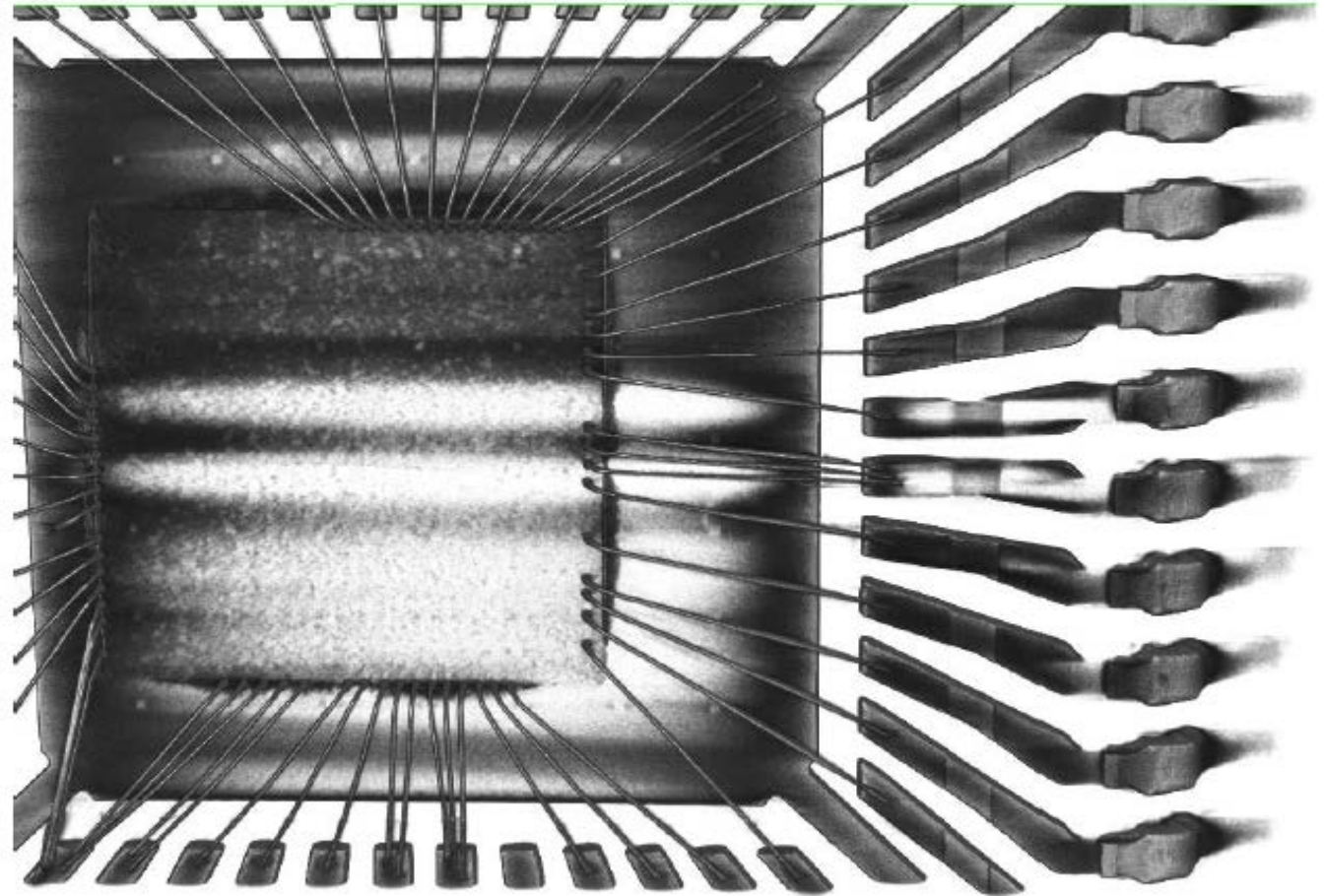
Manual object positioning for variable magnification between approx.

1,6 (\varnothing 140 mm) and 35 (\varnothing 1 mm)

Examples HR-Modus

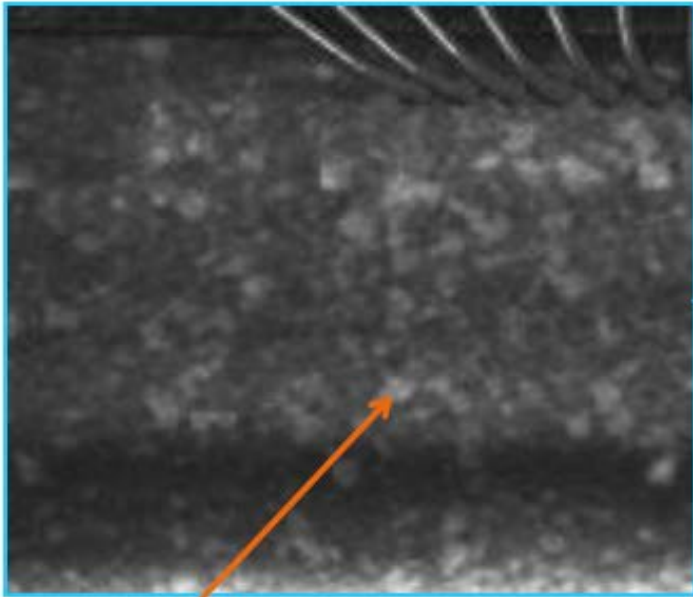
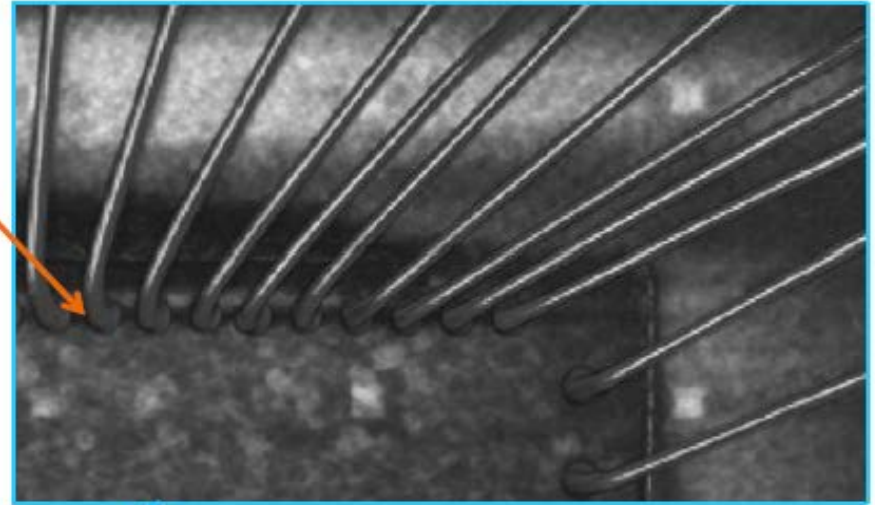
■ USB Stick Chip

- Standard CT
- Scan Time: 80 min
- Voxelsize: approx. 4,6 μm

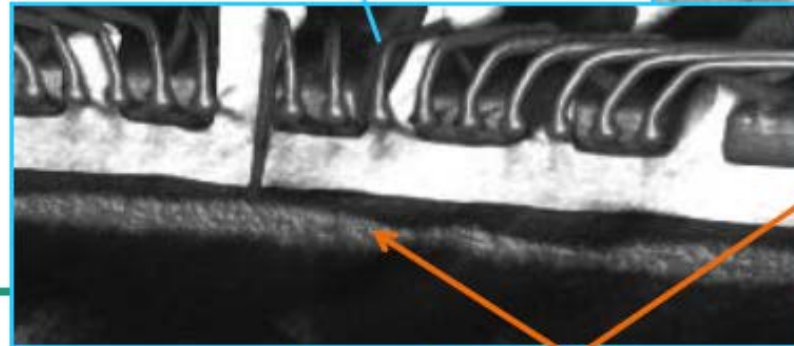
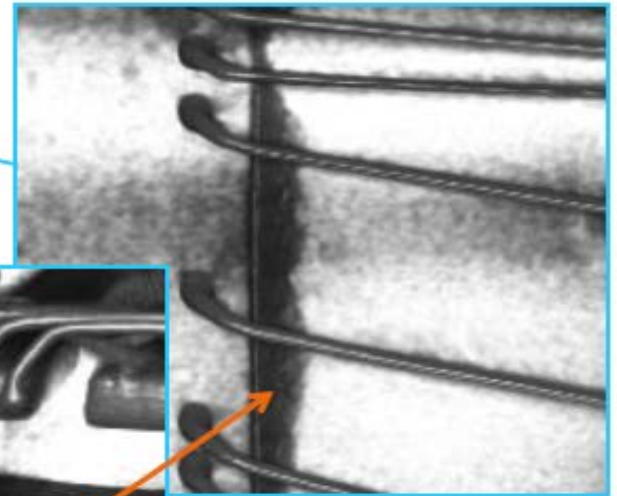
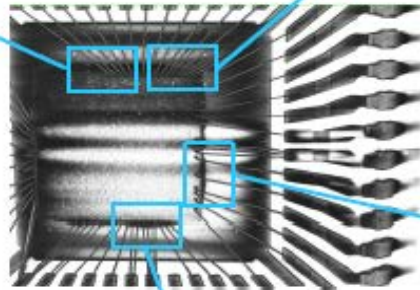


Examples HR-Modus

Bonding



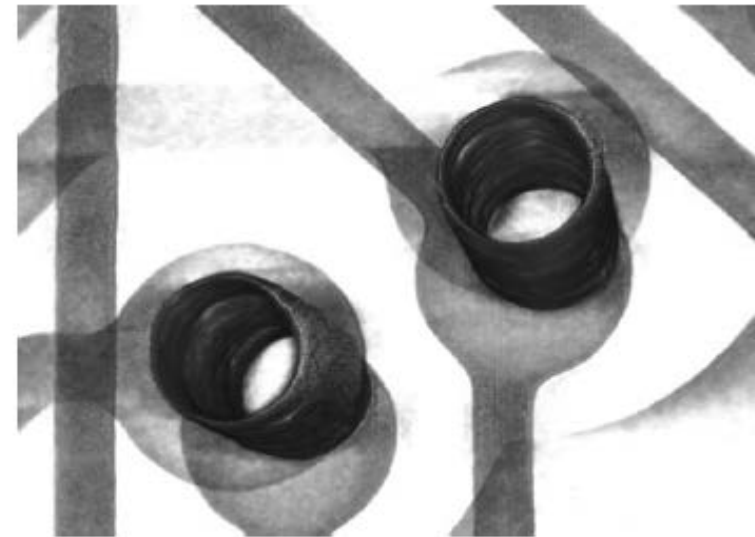
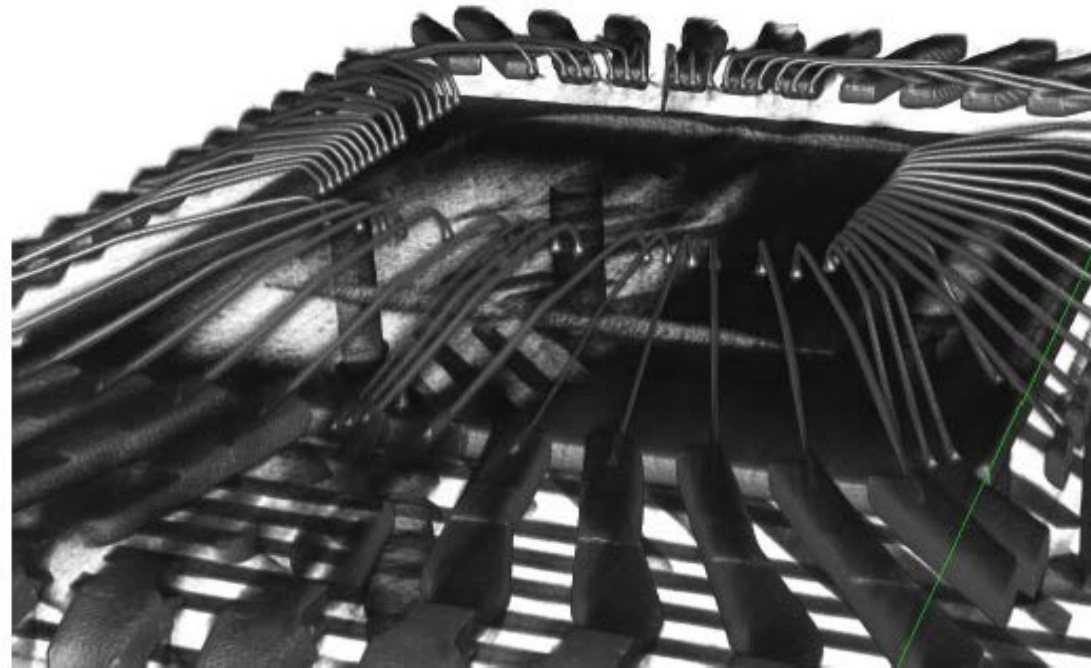
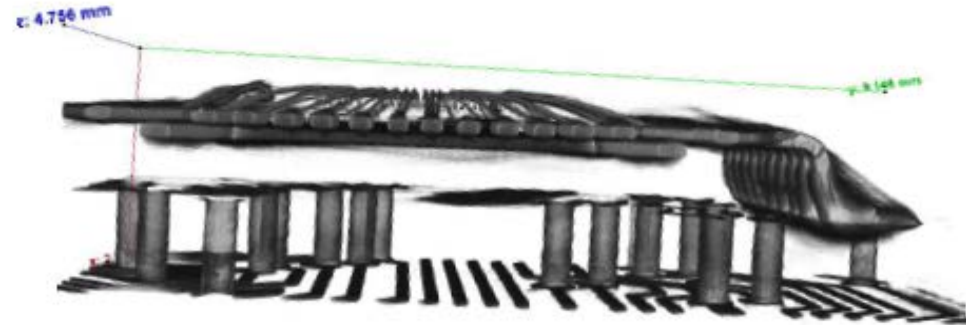
Pores in glued joint



Chip solder connection

Examples HR-Modus

■ USB Stick Chip



Layer through-connection

Examples FastScan

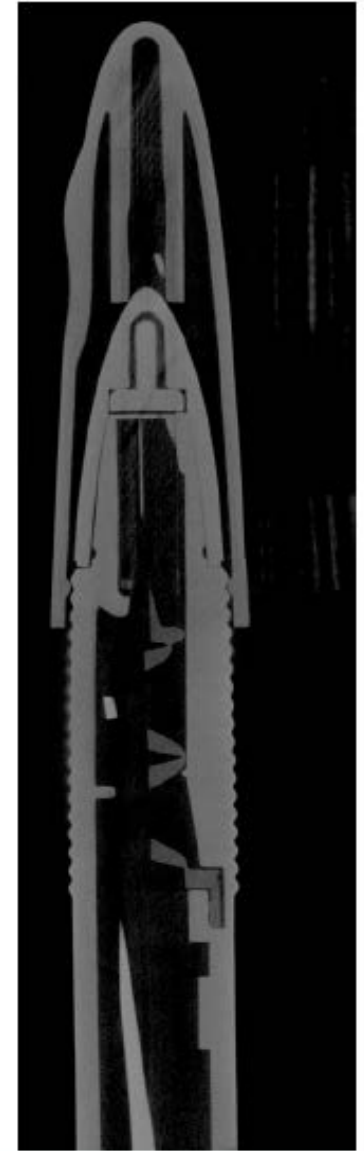
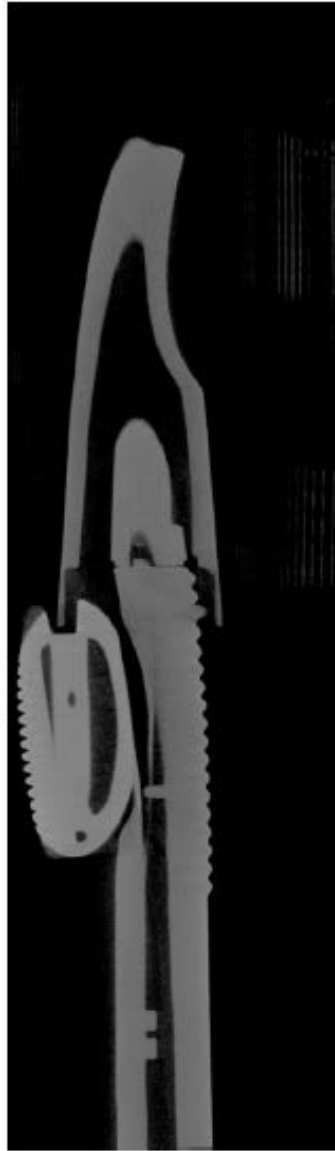
■ Injection Pen

- FlyBy
- Scan Time: 13 min
- Voxelsize: approx. 18,5 μm



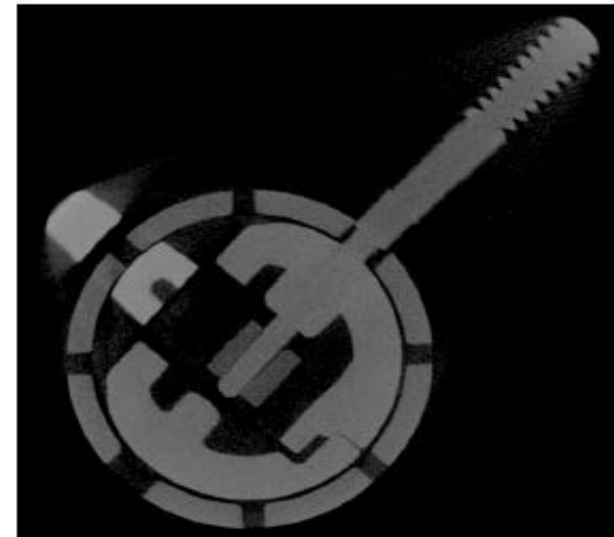
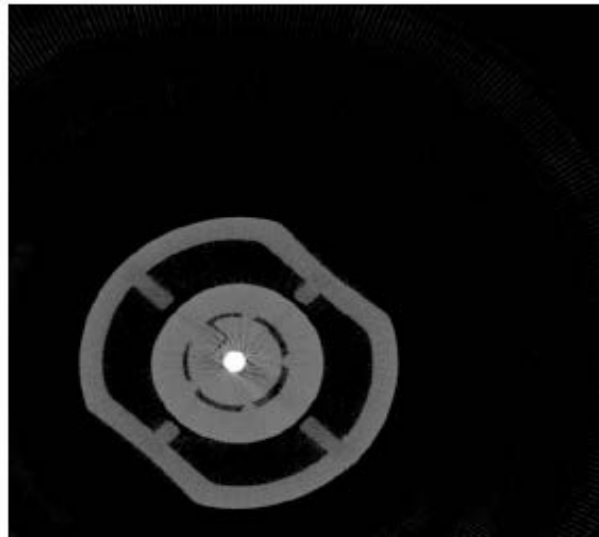
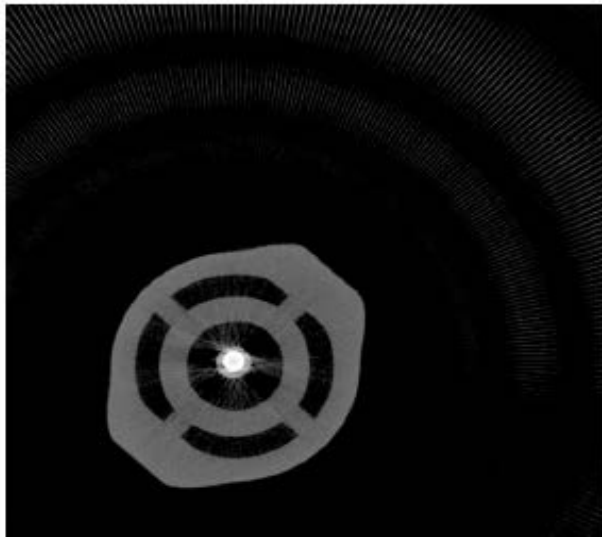
Examples FastScan

- Injection Pen



Examples FastScan

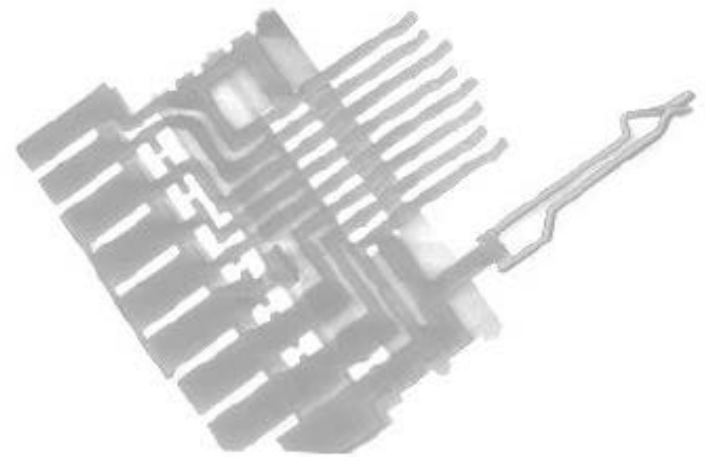
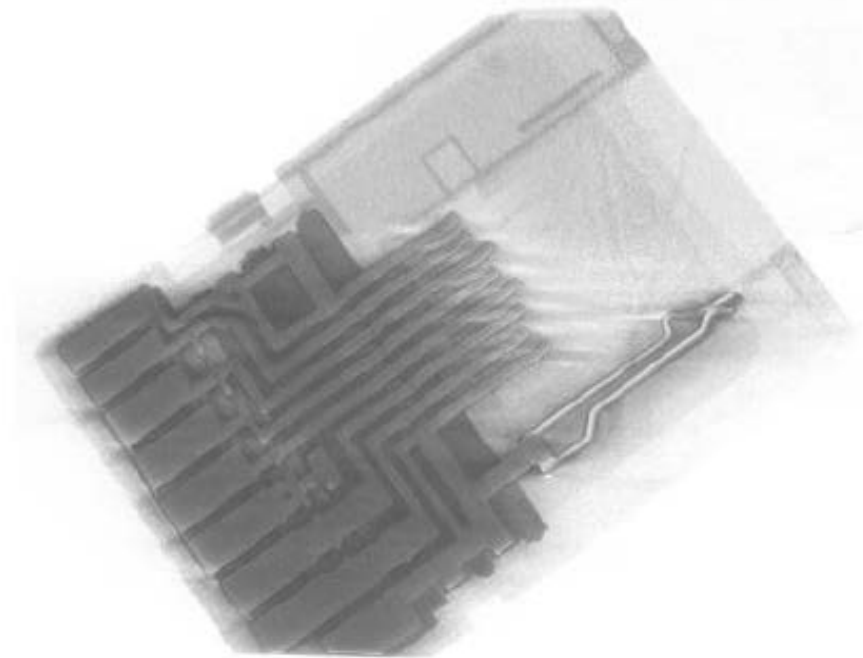
■ Injection Pen



Examples

FastScan-Modus

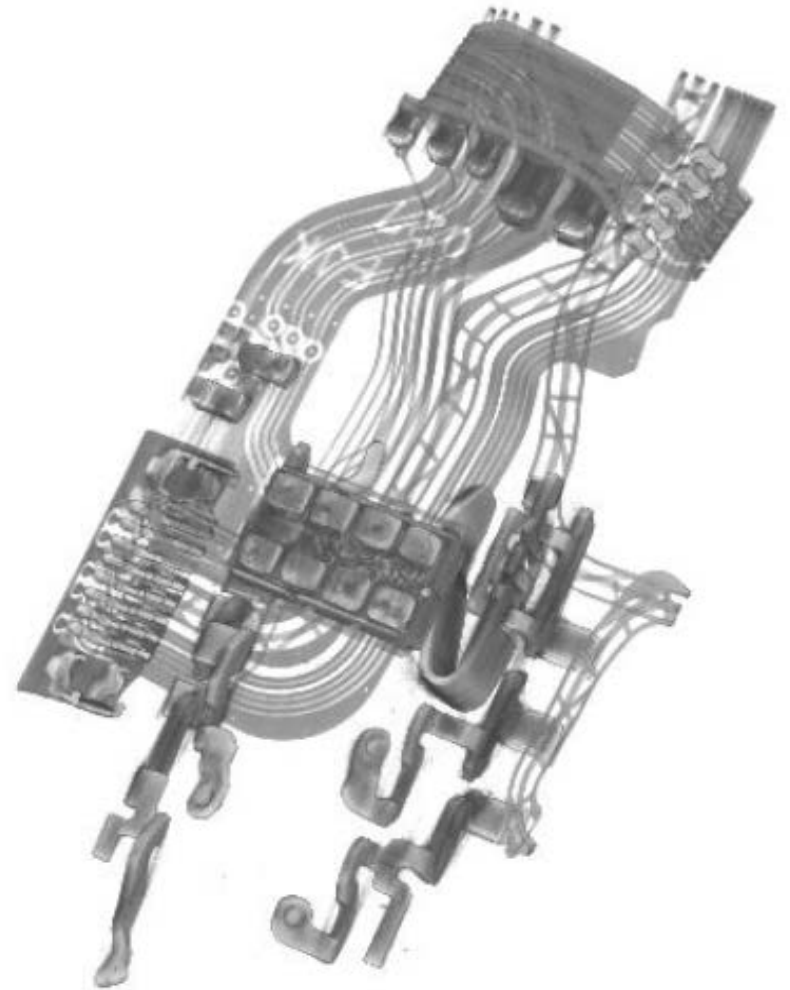
- SD Card
 - FlyBy
 - Scan Time: 6 min



Examples

FastScan-Modus

- Cellphone jack plug
 - FlyBy
 - Scan Time: 10 min

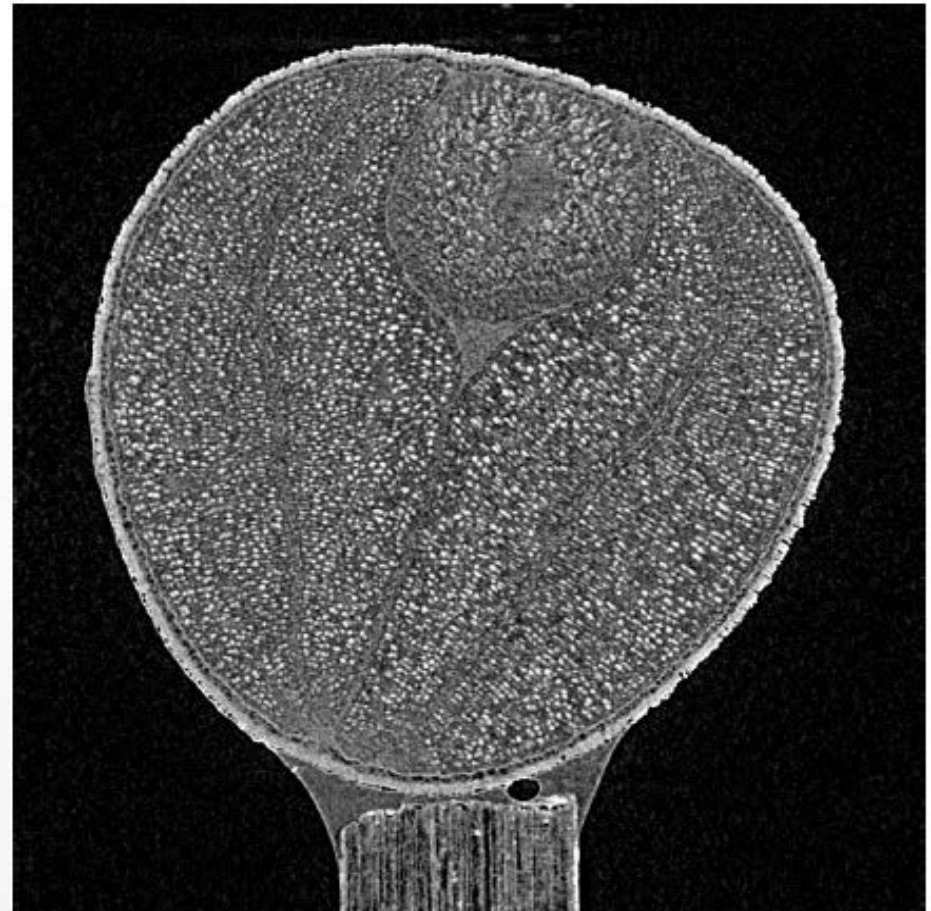


Examples

HR-Modus

■ Canola Seed

- Standard CT
- Scan Time: 73 min
- Voxelsize: approx. 1,8 μm



Examples

HR-Modus

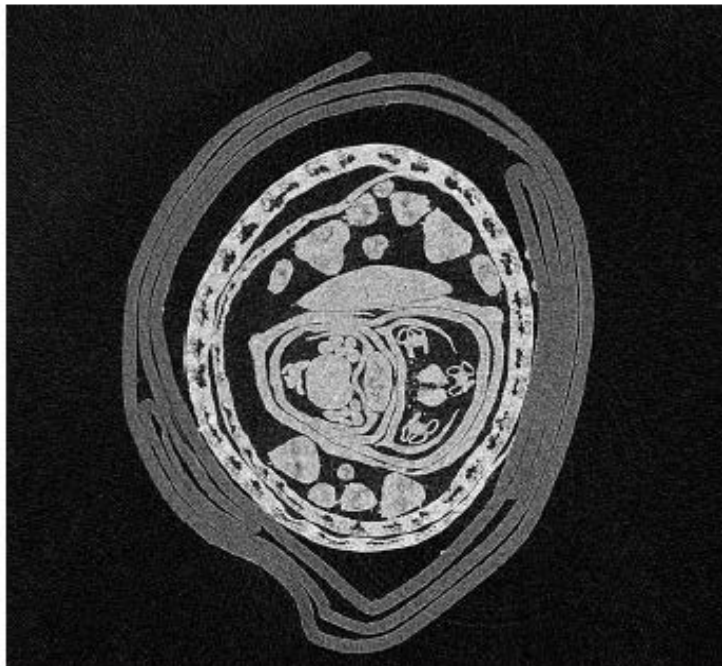
- Wheat Ear (Xylem Structure)
 - Standard CT
 - Scan Time: 47 min
 - Voxelsize: approx. 2,5 μm



Examples

HR-Modus

- Wheat Ear (Xylem Structure)
 - Standard CT
 - Scan Time: 47 min
 - Voxelsize: approx. 2,5 μm

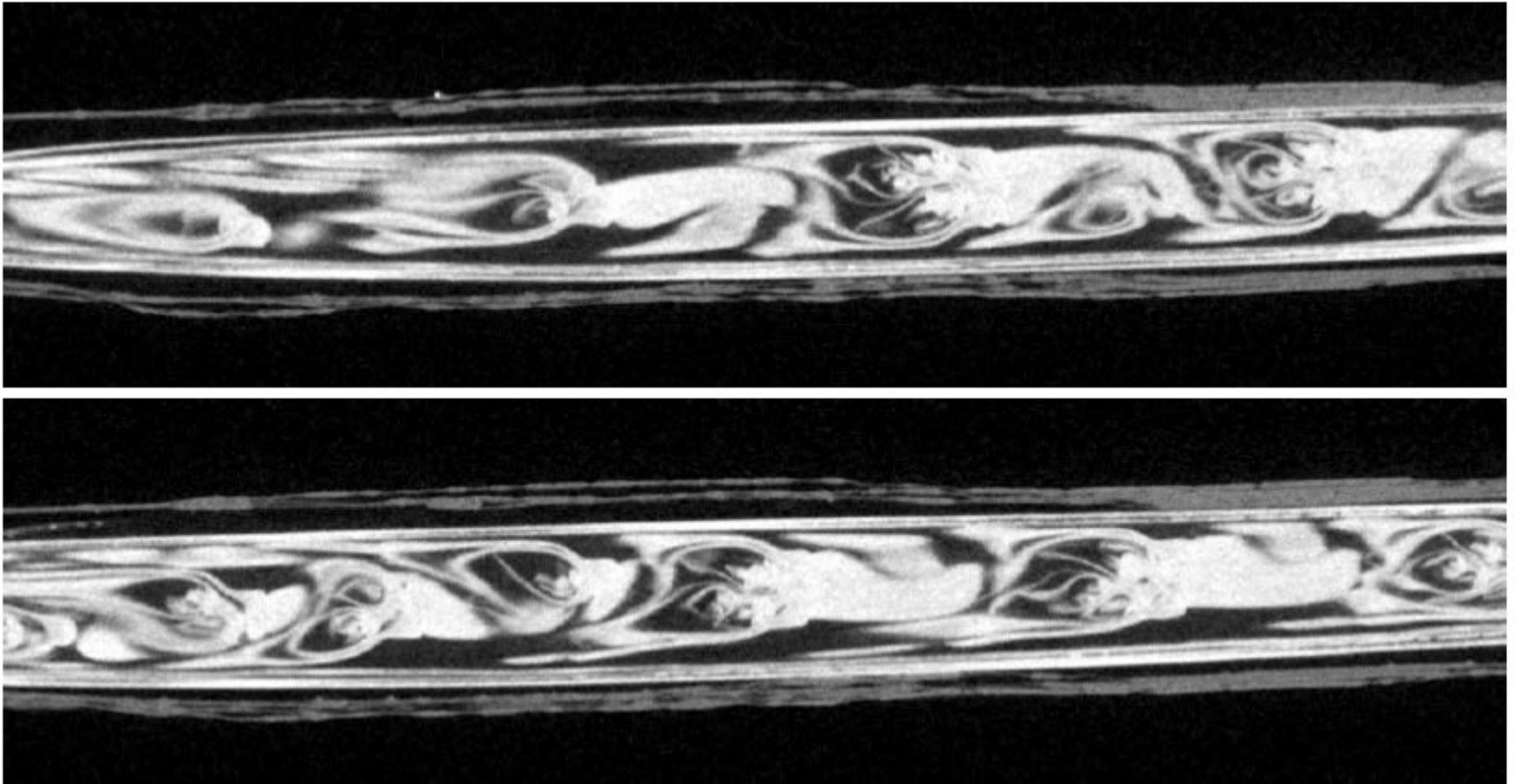


Examples

FastScan-Modus

- FlyBy Measurement
- Scan Time: 4 min
- Voxelsize: approx. 45 μm

- Wheat ear



Shared Labs Europe LTD

Address: 108 Finchley Road – NW3 5JJ London - United Kingdom

Email: alex@sharedlabseurope.com

Phone: +44 (0) 7462 80 58 20

APPLICATION LAB & DEMO CENTER - UK

The University of Nottingham - Manufacturing Metrology Team

B92 Coates Building

University Park - Nottingham, NG7 2RD (UK)

SIMITECNO SRL

Address: Via M. Gallian, 62 – 00133 Roma - Italy

Email: info@simitecno.it

Phone: +39 (0) 67234320

APPLICATION LAB & DEMO CENTER - ITALY

Università degli Studi di Brescia

Gruppo di Tecnologie e Sistemi di Lavorazione

Dipartimento di Ingegneria Meccanica e Industriale

Via Branze, 38 - 25123 Brescia – Italy